

Prime SE Location Available FOR LEASE

8065 SE Grand Ave Unit 140 Portland, OR 97202



Lease Rate: \$16.00 NNN

Size: 1,793 Sq.Ft.

Property Features:

- Beautiful window line overlooking the Spring Water Corridor and Sellwood Park
- Great access to Sellwood, Downtown and Lake Oswego
- Utility sink and washer / dryer hookups

Additional Information:

One ground floor office space available. Prior physical therapist location with open floor plan. Available immediately.

DALE W. BERNARDS

503-701-4000

dale@canterburycre.com

BRANDT BERNARDS

503-803-3111

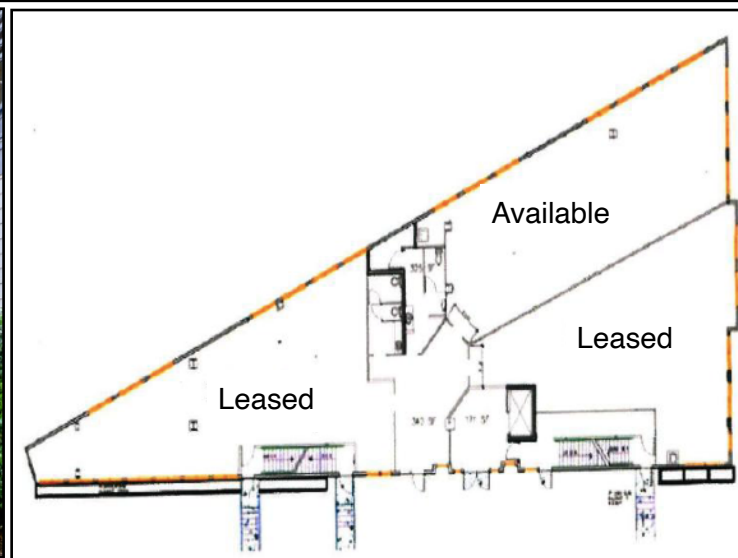
brandt@canterburycre.com

CanterburyCRE.com



**CANTERBURY
COMMERCIAL LLC**

8065 SE Grand Ave Unit 140 Portland, OR 97202



DALE W. BERNARDS
503-701-4000
dale@canterburycre.com

BRANDT BERNARDS
503-803-3111
brandt@canterburycre.com

CanterburyCRE.com



**CANTERBURY
COMMERCIAL LLC**